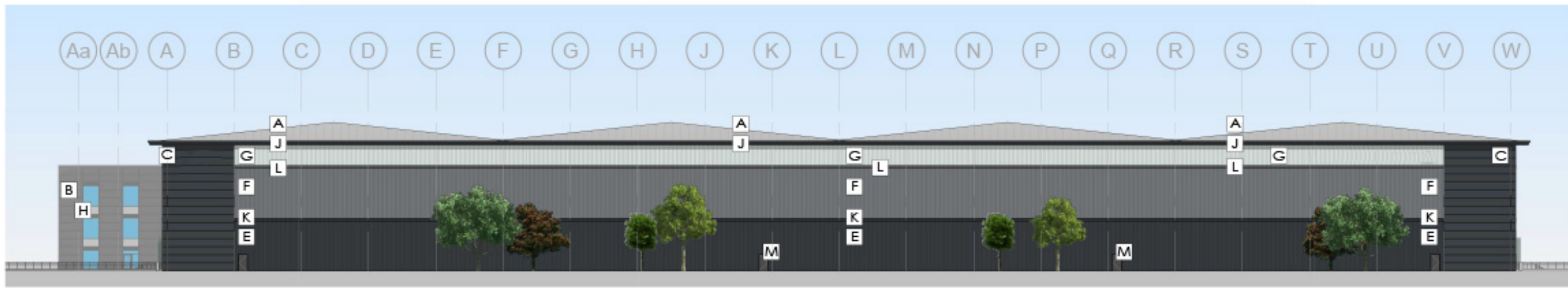


South West Elevation
1 : 500



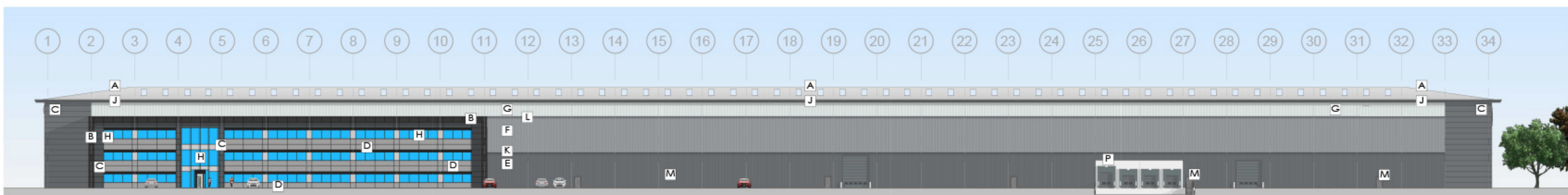
Perspective View



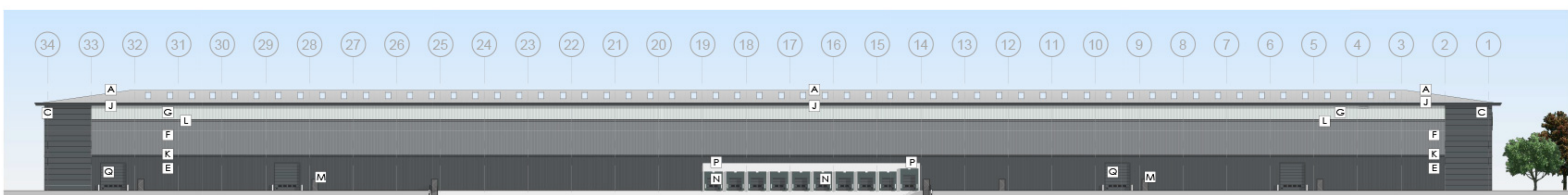
North East Elevation
1 : 500



Perspective View



South East Elevation
1 : 500



North West Elevation
1 : 500



Schedule of Building Materials

- A** Roof Construction: Profiled Steel Roof Cladding System, with outer sheet coated in HPS200 finish. Colour: Goosewing Grey with white Internal Liner
- B** Wall Construction: Horizontally Laid Flat Composite Cladding Panels, with outer sheet coated in HPS200 finish. Colour: Black
- C** Wall Construction: Horizontally Laid Flat Composite Cladding Panels, with outer sheet coated in HPS200 finish. Colour: Anthracite
- D** Wall Construction: Horizontally Laid Flat Composite Cladding Panels, with outer sheet coated in HPS200 finish. Colour: Silver
- E** Wall Construction: Vertically Laid Trapezoidal Profile Composite Cladding Panels, with outer sheet coated in HPS200 finish. Colour: Anthracite
- F** Wall Construction: Vertically Laid Trapezoidal Profile Composite Cladding Panels, with outer sheet coated in HPS200 finish. Colour: Merlin Grey
- G** Wall Construction: Vertically Laid Trapezoidal Profile Composite Cladding Panels, with outer sheet coated in HPS200 finish. Colour: Albatross
- H** Polyester powder coated Aluminium capped curtain walling / window system. With PPC aluminium Brise soleil Louvers as part of the system. Colour Frame: Anthracite RAL 7016. Colour Glass: Neutral in rendition. Colour Glass Spandrel Panel to floor zones: Anthracite RAL 7016. Colour Brise Soleil: Anthracite Colour Extended Caps: Yellow to match Elements Europe Logo.
- J** Two Part Fascia. Colour: Anthracite
- K** Feature Flashing Band. Colour: Anthracite
- L** Feature Flashing Band. Colour: Merlin Grey
- M** Steel door set Colour: Anthracite
- N** Steel faced composite sectional overhead dock door & shelter. Colour: Anthracite
- P** Insulated Precast concrete Prowall System to dock area
- Q** Steel faced composite sectional overhead door. Colour: Anthracite

© 2021 webbgray
 NOTE: THIS DRAWING IS © COPYRIGHT OF WEBB GRAY LTD AND SHOULD NOT BE REPRODUCED WITHOUT PERMISSION.
 ALL PROPOSALS ARE SUBJECT TO CONFIRMATION FOLLOWING DETAILED TOPOGRAPHICAL SURVEY AND GROUND INVESTIGATION WORK.
 IT HAS BEEN ASSUMED THAT OTHER THAN WHERE SHOWN THE SITE IS ESSENTIALLY FLAT WITH NO EASEMENTS TO ABOVE OR BELOW GROUND SERVICES.
 ALL PROPOSALS ARE SUBJECT TO CONFIRMATION FOLLOWING LIAISONS WITH RELEVANT LOCAL AUTHORITIES.
 PRELIMINARY INDICATIVE DRAWINGS MAY BE BASED UPON INFORMATION FROM VARIOUS SOURCES, THE ACCURACY OF WHICH CANNOT BE GUARANTEED.
 WHERE BOUNDARIES ARE SHOWN THESE ARE AS ADVISED BY THE CLIENT AND ARE FOR GENERAL GUIDANCE ONLY. WHENST PLOTTED WITH REFERENCE TO LAND REGISTRY DATA WHERE AVAILABLE AND INTERPOLATED AS PHYSICAL FEATURES ON SITE WHERE POSSIBLE, THEY ARE NOT INTENDED TO REPRESENT DEFINITIVE SITE EXTENTS OR LEGAL OWNERSHIP.
 ALL DIMENSIONS AND SETTING OUT COORDINATES TO BE CHECKED ON THE PROJECT SITE BEFORE WORK IS COMMENCED OR MAKING ANY SHOP DRAWINGS.
 IF THIS DRAWING HAS BEEN RECEIVED ELECTRONICALLY IT IS THE RECIPIENTS RESPONSIBILITY TO PRINT THE DOCUMENT TO THE CORRECT SCALE. ALL DIMENSIONS ARE IN MILLIMETRES UNLESS STATED OTHERWISE IT IS RECOMMENDED THAT INFORMATION IS NOT SCALED OFF THIS DRAWING. THIS DRAWING SHOULD BE READ IN CONJUNCTION WITH ALL OTHER RELEVANT DRAWINGS AND SPECIFICATIONS.

Revision: Description: By: Date:

Client: **STOFORD**

Project: 154 Element

Drawing Title: Elevations Sheet 1 - Base Option

webbgray
 Web Gray Ltd
 Chartered Architects
 75-77 Colmore Row
 Birmingham B3 2AP
 t: 0121 616 6030
 e: architecture@webbgray.co.uk
 w: www.webbgray.co.uk

Scale @ A1:	Date:	Drafted:	Checked:
As indicated	SEP 21	AS	DDH
Job No:	Drawing No:	Revision:	
8676	SK-01-10-21-P-102		

PLANNING